

# Printing Fundamental Information

## In this chapter

---

The Print Fundamentals function 948

Print command on Fundamental Data Window 949

How to print Strategy Settings 950

After fundamental data is imported for a strategy and a ranking has been computed, fundamental information can be printed. The following information can be printed for all stocks, for stocks in a list, for selected stocks, or for an individual stock:

- Overall Fundamental Ratings
- Complete fundamental information (including fundamental field data values and ranks)

A Strategy Settings report for a fundamental strategy can also be printed. This report lists the following for all fields:

- Field Name
- Sort Order (Ascending or Descending)
- Fundamental Rating Weight
- Data Range Values

## The Print Fundamentals function

---

► *To print fundamental information for stocks:*

1. Open *Fundamentals for TradingExpert Pro*.
2. Click the **Fundamentals** command on the menu bar, and select **Print Fundamentals** from the drop-down menu. The *Print Fundamental Information* dialog box will appear on your screen.
3. From the *Source* section, choose one of the following options:

The dialog box titled "Print Fundamental Information" contains the following elements:

- Source section:**
  - All Tickers
  - All Tickers in List: MPT
  - Tickers: TKR
- Items to print section:**
  - Overall Fundamental Ratings
  - All Fundamental Information
- Buttons:** OK, Cancel, Help

*Print Fundamental Information* dialog box.

### Note

You can print fundamental information for an individual stock by displaying the fundamental data window for that stock, then clicking the **Print** command button found on the bottom of the window.

- *All Tickers* - Prints fundamental information for all tickers in your data base.
- *All Tickers in List* - Prints fundamental information for all tickers in a list. List is selected from the adjacent list box. The default list is the currently displayed Fundamental Report list.
- *Tickers* - Prints fundamental information for one or more tickers. Tickers for which fundamental information will be printed are shown in the adjacent text box. The default ticker(s) is the currently selected ticker(s) on the Fundamental Report. Type in your own ticker selections, separated by semi-colons (;).

4. From the *Items to print* section, choose one of the following:

- Overall Fundamental Ratings
- All Fundamental Information

5. Click **OK** to print selected information.

## Print command on the fundamental data window

---

You can also print fundamental data for a single stock from the fundamental data window.

► *To print a fundamental data report for a single stock:*

1. With the Fundamental Report displayed, double click on a stock to open the fundamental data window for that stock.
2. Click on the **Print** command to print a report.

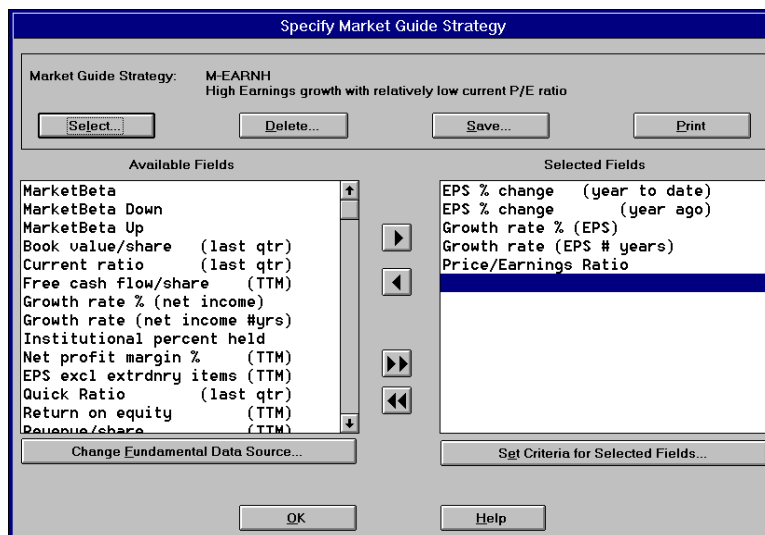
Field	Value	O	Rank
P/E RATIO	17.30	(A)	668
STOCK PRICE	16.10		
30-Dy AVERAGE VOL	184.10		
EARNINGS GROWTH 1-YR	75.40	(D)	79
BETA	1.40	(A)	293
REL PERFORMANC 1-YR	109.20	(D)	47
VOLATILITY	33.40	(A)	643
SALES GROWTH 5-YR	7.60	(D)	417
1-MO CHANGE PROJ CFY	8.10	(D)	999

*Fundamental data window with Print command*

## How to print Strategy Settings

► To print a Strategy Settings report for a fundamental strategy, follow these steps:

1. Open the *Fundamentals for TradingExpert Pro* application.
2. Click the **Specify Strategy** toolbar button (or select the **Specify Strategy** option from the *Fundamentals* drop-down menu) to open the *Specify Strategy* window. The complete title of this window includes the name of the currently active Data Source.
3. The active strategy is named in the upper section of this window. To change the active strategy, click the **Select** command button and continue as follows:
  - The dialog box titled *Select <Data Source> Strategy* lists all of the strategies for the active Data Source. In the list box, highlight a strategy.
  - Click the **Select Strategy** command button. The *Specify <Data Source> Strategy* window reappears displaying the new strategy.
4. Click the **Print** command button located in the upper section of the *Specify <Data Source> Strategy* window. A Strategy Settings report for the active strategy will be printed.



*Specify Market Guide Strategy window with Print command*