

Section 2.

Using Fundamentals for TradingExpert Pro

Chapter IV

Setup

In this chapter

Overview 900

Step 1. Select a data service for fundamental data 901

Step 2. Select a data source 902

Step 3. Specify a strategy 904

Step 4. Set Preferences 907

Overview

This chapter is a guide to setting up Fundamentals for TradingExpert Pro, in preparation for retrieving fundamental data. Before fundamental data can be downloaded using the **Data Retrieval** function of TradingExpert Pro, you must first select a strategy which specifies the fundamental fields that you will be tracking. If you are not sure which fundamental fields that you want to track, you can simply select one of the AIQ-installed predefined strategies. Or, you can build a strategy by selecting from a list of the fundamental fields available from the data service and data source that you are using.

The data fields that are available to you for selecting a strategy depend on the data service that is specified in the *Setup Window* of **Data Retrieval**. For example, if Dial/Data is your data service, you are given two options for a fundamental data source, the Market Guide fields or Dial/Data fields.

Fundamentals for TradingExpert Pro provides three different built-in lists of data fields:

- Market Guide fields: 24 fields available from Dial/Data, Interactive Data, and Telescan.
- Dial/Data fields: 71 fields available only from Dial/Data.
- Telescan fields: 207 fields (called ProSearch Fields) available only from the Telescan data service.

Your list of fundamental fields can contain as few or as many fields as you like.

To set up Fundamentals for TradingExpert Pro, follow the steps outlined in this chapter. In addition to setting up Fundamentals for TradingExpert Pro for downloading fundamental data, the setup procedure also specifies the settings necessary to compute fundamental field rankings and an overall Fundamental Rating for each stock.

Step 1. Select a data service for fundamental data

Your choice of a data service determines fundamental data fields that will be available to you for downloading and for specifying a fundamental strategy. If you plan to import Scan Files from Telescan, Telescan must be your active data service.

► *To select or change your active data service, proceed as follows:*

1. Double click the **Data Retrieval** icon in the TradingExpert Pro Program Group.
2. The Data Retrieval main window will appear with the *Data Retrieval Options* page already opened. The currently designated data service is shown at the top left in this window.
3. To open the *Setup* page, click the **Setup Options** tab.
4. Move your mouse to the *Service* text box and click the arrow to display a list of the AIQ compatible data services.
5. Select the data service you plan to use for fundamental data.
6. Click the **Setup** command button next to the data service name to access a dialog box to enter account information. See Chapter III in Part 1 of this Reference Manual for further instructions.
7. If the new data service requires a different network, see Chapter III in Part 1 for instructions on selecting a network.
8. After you have completed entries, select the **Data Retrieval Options** page and click the **Save Setup** command button.

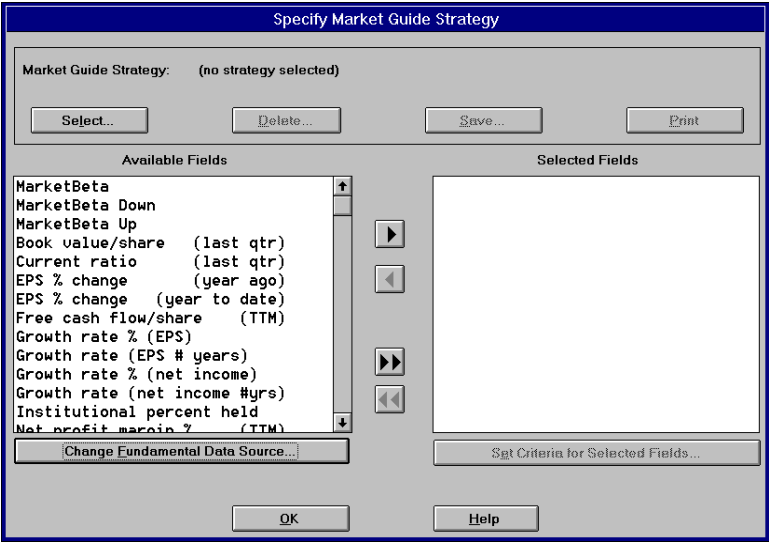
Step 2. Select a data source

Your data service may provide fundamental data from more than one data source. The three data sources supported by AIQ are:

- Market Guide (24 fields): available from Dial/Data, Telescan, and Interactive Data Corporation.
- Dial/Data (71 fields): available only from Dial/Data.
- Telescan (207 ProSearch Fields): available only from Telescan.

► *To change the active Data Source (Dial/Data and Telescan data services only), do the following:*

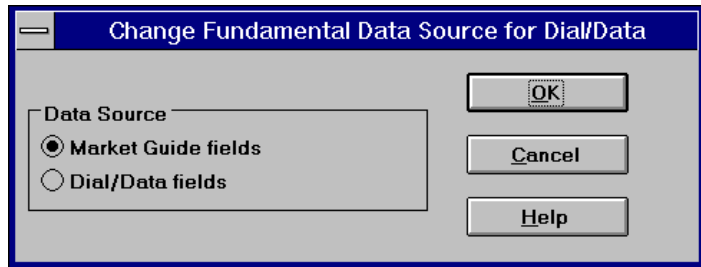
1. Open the **Fundamentals for TradingExpert Pro** application.
2. Click on the **Specify Strategy** toolbar button (or select the **Specify Strategy** option from the *Fundamentals* menu command) to open the *Specify Strategy* window. The complete title of this window will include the name of the active data source (e.g., *Specify Market Guide Strategy*).



Specify Strategy window

3. Click the **Change Fundamental Data Source** command button located below the text box on the left. A dialog box will appear which contains the data source options for the active data service.

*Change Fundamental Data Source
dialog box*



4. To select a data source, click on the appropriate option button, then click **OK**.
5. The fields that are available from this data source appear in the *Available Fields* text box.

Step 3. Specify a strategy

Note
The **Delete**, **Save**, and **Print** command buttons in the upper section of the *Specify Strategy* window are used for deleting, saving, and printing the active strategy.

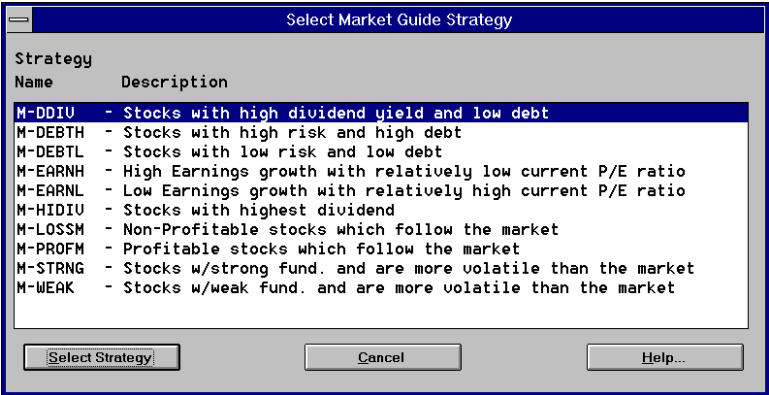
Note
You can specify and track multiple strategies. When you are tracking multiple strategies, or when you add or change a field in a strategy, the *Rerank Fundamentals* function must be used to compute fundamental field rankings and overall Fundamental Ratings for the active strategy. For more information on using the *Rerank Fundamentals* function, see Chapter VI.

The easiest way to specify a strategy is to simply select one of the predefined strategies installed with Fundamentals for TradingExpert Pro. See Chapter II for information on fundamental strategies and a list of the predefined strategies.

You can also build your own strategy if you know which fields you want to track, which fields you want to incorporate in the overall Fundamental Rating, and the amount of weight that each will be given in the construction of the overall Fundamental Rating. See Chapter X for detailed instructions on building a strategy.

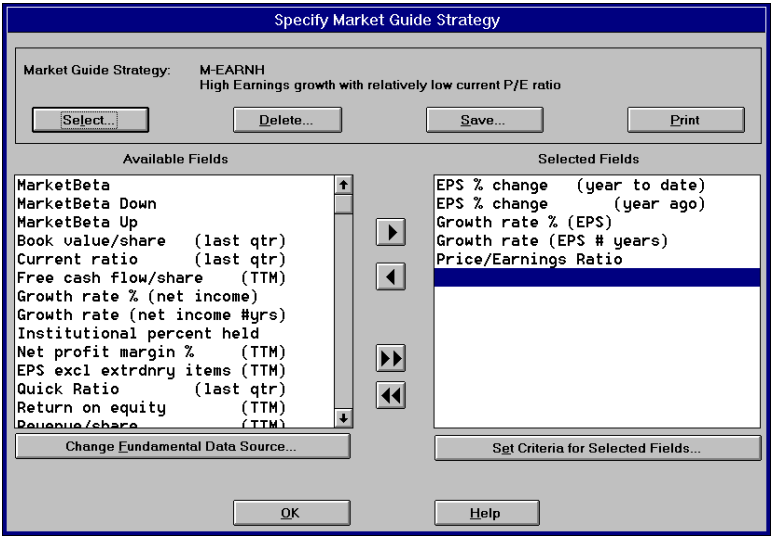
► *To select a predefined strategy, do the following:*

1. Open the *Fundamentals for TradingExpert Pro* application and click on the **Specify Strategy** toolbar button to display the *Specify Strategy* window.
2. From the upper section of this window, choose the **Select** command button. This command displays a dialog box which lists all of the available strategies for the active data source.



Dialog box listing strategies

3. Select a strategy by first highlighting it in the text box and then clicking **Select**.
4. The *Specify Strategy* window which reappears now displays the name of the selected strategy in the top section of the window. The *Selected Fields* text box lists the fields that are included in the strategy. To accept the strategy, click **OK**.



Selected Strategy displayed

Viewing Ranking Criteria and Valid Data Ranges

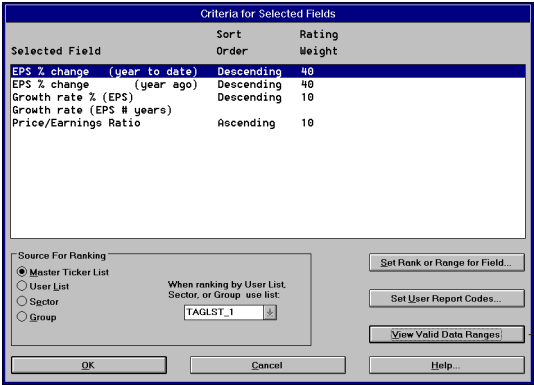
The Ranking Criteria and Valid Data Ranges which have been entered for the strategy you have selected may be viewed from the *Specify Strategy* window.

Note

When viewing Ranking Criteria, those fields designated for ranking will show an entry (Ascending or Descending) in the column labeled *Sort Order*. Fields with both a *Sort Order* and a *Rating Weight* are incorporated in the overall Fundamental Rating.

► To view *Ranking Criteria and Valid Data Ranges*, proceed as follows:

1. On the *Specify Strategy* window, click the **Set Criteria for Selected Fields** command button. A window titled *Criteria for Selected Fields* will appear.



Criteria for Selected Fields dialog box

View Ranking Criteria/View Valid Data Ranges command button

2. Ranking Criteria and Valid Data Ranges are displayed to the right of the field name in the text box. However, the two types of information are not displayed at the same time. To toggle back and forth between the two data types, toggle the **View Ranking Criteria/View Valid Data Ranges** command button.

Step 4. Set Preferences

Several options for the handling of data errors and the computation of the field rankings and the overall Fundamental Rating may be changed through the *Preferences* function. Before downloading fundamental data, you should view the settings on the *Preferences* dialog box and make any necessary changes.

► *To change Preferences:*

1. Open the Fundamentals for TradingExpert Pro application.
2. Click the **Fundamentals** command on the menu bar, and from the drop-down menu choose **Preferences**.
3. The *Fundamental Preferences* dialog box contains two groups of self-explanatory options. To select an option, place a check mark in the appropriate check box.
4. When you have completed any changes in the *Preferences* dialog box, click **OK** to return to the main Fundamentals window.

Fundamental Preferences

☒ Do not compute an overall Fundamental Rating if symbol has a NA (not applicable) for a fundamental field.

☒ During computation of overall Fundamental Ratings create a Fundamental Report of the tickers with the top Ratings.

Maximum Number of Symbols in this Report:

☒ Automatically generate a List with the symbols contained in the Fundamental Report. (The name of this List will be the same name as the strategy)

Logging Errors For System Messages

☒ Ticker has no fundamental data for Ranking

☒ Ticker is inactive during Ranking

☒ Ticker has a NA for one or more fields when computing overall Fundamental Rating

Fundamental Preferences dialog box

The three options in the first group pertain to ranking fundamental fields and computing the overall Fundamental Rating:

- *Do not compute an overall Fundamental Rating if symbol has an NA (not applicable) for fundamental field.*
- *During computation of overall Fundamental Ratings, create a Fundamental Report of the tickers with the top Ratings.*
- *Automatically generate a list with the symbols contained in the Fundamental Report. (The name of this list will be the same name as the strategy.)*

If the second option is checked, you may also change the maximum number of symbols in the report by changing the number shown in the text box (default number is 50).

The second group of options pertains to the logging of errors found during data retrieval. For those options that are selected, a message will be written to the System Messages file when the designated type of error is found.

- Ticker has no fundamental data for Ranking
- Ticker is inactive during Ranking
- Ticker has a NA for one or more fields when computing overall Fundamental Rating