

Using Real-Time Quotes and Custom Barometer

In this chapter

Real-time Indicator Barometer explained 692

Barometer configurations 694

Monitoring indicators 695

Monitoring real-time quotes and other ticker data 700

Charting tickers 703

Displaying news headlines and stories 704

Obtaining Nasdaq Level II quotes 704

Displaying fundamental information 704

Real-time Indicator Barometer explained

The Indicator Barometer is a unique AIQ tool that is an integral part of the indicator Control Panel in the *Charts* and *Real-Time Alerts* applications. In these applications, the Barometer consists of a vertical column of colored squares, one for each of the indicators listed in the Control Panel, and its purpose is to provide a quick “snapshot” view of the status of these indicators for a particular stock and at a particular point in time.

On the Real-Time Barometer screen, the individual Barometer squares have the same meaning (i.e., a “snapshot” view of the status of an indicator) but the overall objective is different. Rather than displaying the status of multiple indicators for one ticker, the screen displays the status of a few indicators for multiple tickers. And since the application is designed primarily for short-term traders, any time interval (real-time from 1 to 60 mins., daily, or weekly) can be selected for each displayed indicator. This allows you to view side by side multiple versions of the same indicator with different time intervals used in the computation of each version.

Another important difference is that, instead of one square, a row of five Barometer squares is displayed in each indicator column. These five squares show the Barometer state at five consecutive points in time. The length of time represented by each square depends upon the time interval selected. This five-square row shows you at a glance a short-term history of the status of the indicator and, since the information is dynamically updated, changes in status are easily seen. Tracking indicator rotation from bearish (red) to bullish (green) or vice versa also becomes much easier with an historical time frame.

Since the *Real-Time Quotes and Custom Barometer* application provides complete flexibility, you can set up the screen in any configuration you choose. You can display as many indicators as you like and you can choose the time interval for each. In configuring the screen, you can display the same indicator with multiple time periods or you can display several indicators with the same or different time periods. The choice is entirely yours.

Properly configured, the Real-Time Barometer screen can reveal indicator behavior that often precedes significant changes in trend.

The example below shows the Money Flow indicator computed for four different time periods (5 min., 30 min., 60 min., and daily). Each indicator column displays five Barometer squares. In each column, the squares are arranged consecutively with the most recent square on the right and the earliest on the left.

In the example, the color red appears black and the color green appears gray.

▲ Ticker	Mny Flow-5m	Mny Flow-30m	Mny Flow-60m	Mny Flow-D
AMGN	▼▲▲▲▲	▲▲▲▲▲	▲▲▲▲▲	▲▲▲▲▲
AMZN	▼▲▲▲▲	▲▲▲▲▲	▲▲▲▲▲	▲▲▲▲▲

The length of time that is encompassed by the five-square history shown in each column depends upon the time period that is selected for the indicator. For example, if you display the MnyFlow indicator computed for 5 min. time periods, each square represents the status of the MnyFlow indicator for one 5 min. time period and the five squares show the most recent 25 minutes of indicator status.

Barometer configurations

Each Indicator Barometer square can have one of four configurations:

1. **Solid Green:** indicates strong up.
2. **Green Up Arrow on Yellow Square:** indicates a weak up movement.
3. **Red Down Arrow on Yellow Square:** indicates a weak down movement.
4. **Solid Red:** indicates strong down.

Barometer rules

The *Real-Time Quotes and Custom Barometer* application includes built-in rules for each indicator that determine the color and configuration for any set of circumstances. The rules that are used for an indicator depend on the indicator type. Indicator type refers to the type of chart that is used to display the indicator.

The five indicator types are: One Line, Two Lines, Histogram, RSI, and Special. The latter designation (Special) is used for those indicators that, because of their nature, require a special logic to determine Barometer colors and configuration.

For a detailed explanation of the built-in (default) rules for all AIQ indicators, see Chapter II of the *Technical Indicators Reference Manual*.

For users who prefer to define their own rules, the *Custom Indicator* function accessed from *Real-Time Alerts* can be used to enter custom Barometer rules.

Monitoring indicators

Adding indicator columns

You add new indicator columns to the Quotes and Barometer monitor by selecting from a table of available indicator/time interval combinations. The list of available indicators includes the entire indicator library except market plot indicators. Any custom indicators that the user has created will also be included.

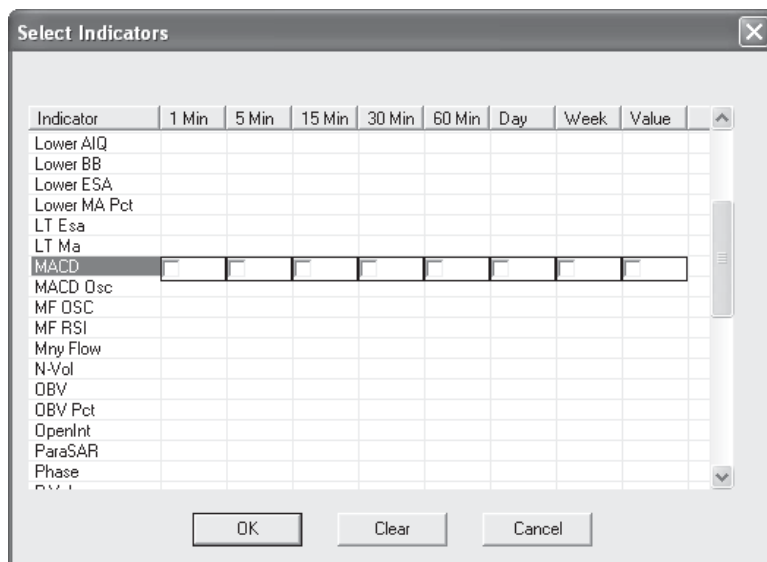
Each indicator column consists of five Barometer squares representing the five most recent Barometer states. You can also choose to display the most recent value of the indicator in a separate column just to the right of the Barometer squares.

► *To add a new indicator column to the Quotes and Barometer monitor:*

1. Click with your right mouse button on any existing column header and select **Insert Indicator Column** from the menu that appears. The *Select Indicators* dialog box that appears lists all available indicators.

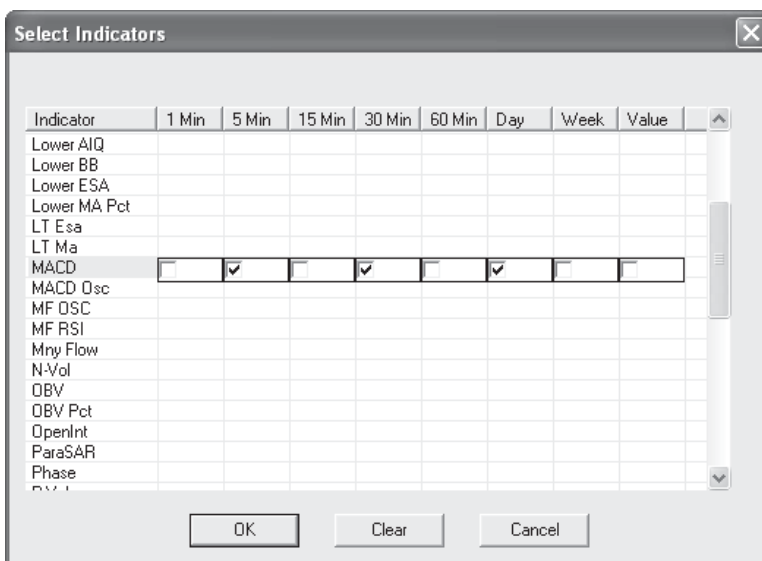
Note

If you display a custom indicator in an indicator column, you must first specify rules to determine Barometer color and configuration. Otherwise a blank column will be displayed. To specify Barometer rules, go to *Real-Time Alerts* and open *Indicators Properties/Custom Indicators*. See *Real-Time Alerts*, Part 4, Chapter VII.



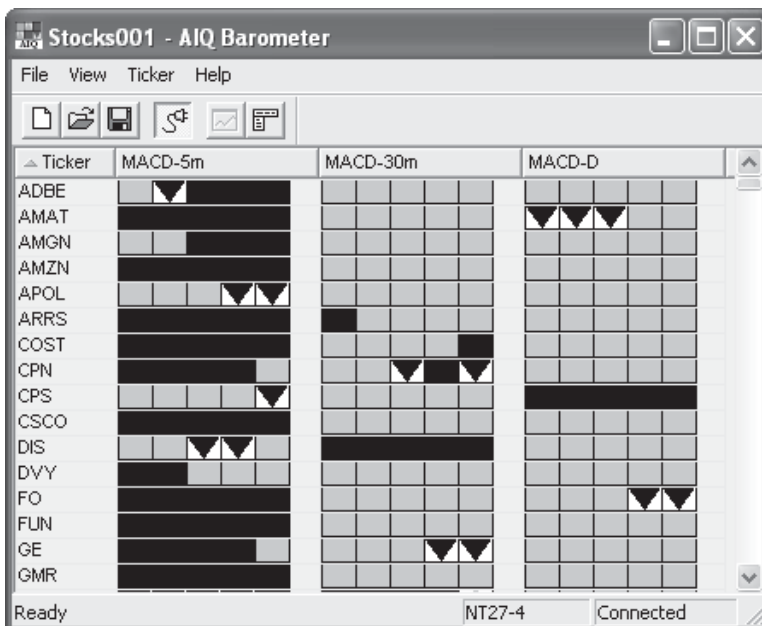
Select Indicators dialog box with MACD indicator selected

2. From the list of indicators, find and click on the indicator that you want to add to the monitor. A row of boxes will appear opposite the indicator name.



Select Indicators dialog box with three MACD indicator time intervals selected

3. Click on a box to select a particular time interval for the indicator. A check mark will appear in the selected box.
4. Select any additional time intervals for the same indicator by clicking on the boxes. Check marks will appear in all selected boxes.

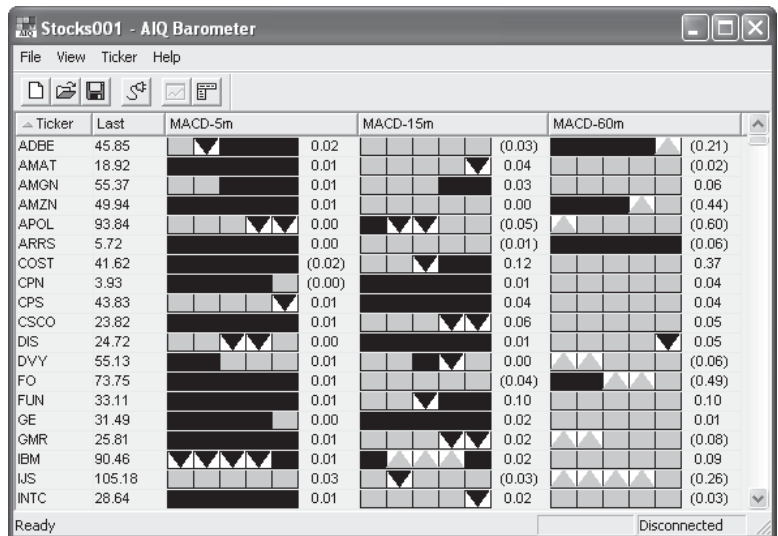


Quotes and Barometer window with three MACD indicator columns

5. Click **OK** to close the dialog box. The added indicator columns will now be displayed in the Quotes and Barometer window and the barometer squares for all tickers will be quickly configured.

► *To display indicator values for an indicator:*

1. Right click on any existing column header and select **Insert Indicator Column** from the menu that appears. The *Select Indicators* dialog box will appear. This screen lists all available indicators and shows the indicator/time interval combinations that are currently selected. The indicator/time interval combinations that are currently selected will be designated with the word TRUE.
2. In the list of indicators, click on the indicator that you want to display current values for.
3. Click on the box at the top labeled **Value**. A check mark will appear in the box.
4. Click **OK** to close the dialog box. Any time interval that is selected for this indicator will now display the current value. Values are displayed in a column to the right of the indicator Barometer columns. If you can't see the value, you will need to widen the column.

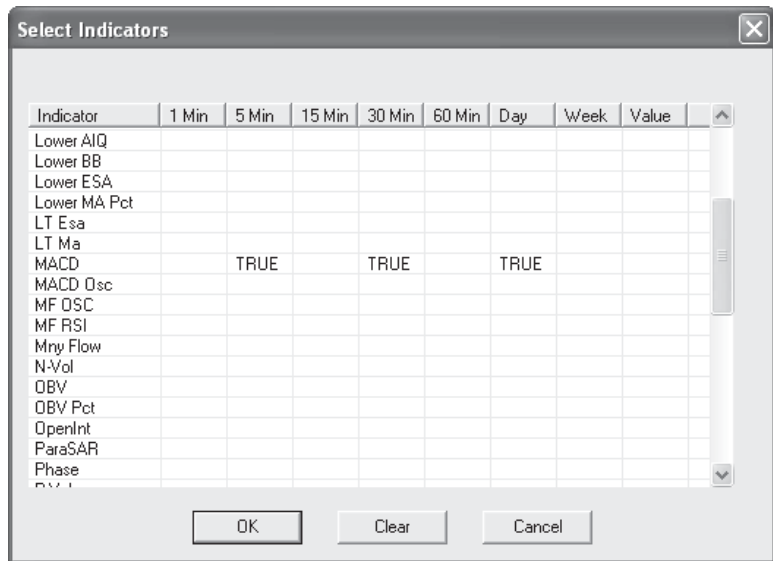


Quotes and Barometer window with three MACD indicator columns and values shown

Removing and revising indicator columns

► *To remove or revise existing columns:*

1. Click with your right mouse button on any existing column header and select **Insert Indicator Column** from the menu that appears. The *Select Indicators* dialog box will appear. The screen lists all available indicators and shows the indicator/time interval combinations that are currently selected.
2. From the list of indicators, find the indicator that you want to make changes to or remove. The indicator/time interval combinations that are currently selected will be designated with the word TRUE.



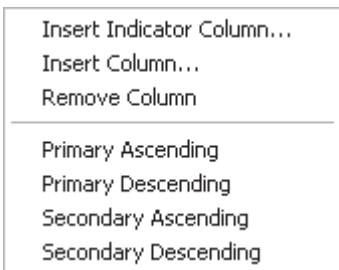
Select Indicators dialog box with three existing MACD indicator columns

3. Click on the indicator. A row of boxes will appear opposite the name and any selected boxes will now contain check marks.
4. Click on a selected box to remove the check mark. This removes the indicator column from the monitor screen.
5. Select another time interval for the same indicator by clicking on its box. A check mark will appear in the newly selected box.
6. Click **OK** to close the dialog box. Any deselected columns will no longer appear on the Quotes and Barometer screen. Any newly selected indicator columns will now be displayed. The Barometer squares for all tickers will be quickly reconfigured.

► *To quickly remove an existing indicator column:*

1. Click with your right mouse button on the header of the indicator column that you wish to remove.
2. From the menu that appears, select **Remove Column**. The column is immediately removed from the screen.

Monitoring real-time quotes and other ticker data



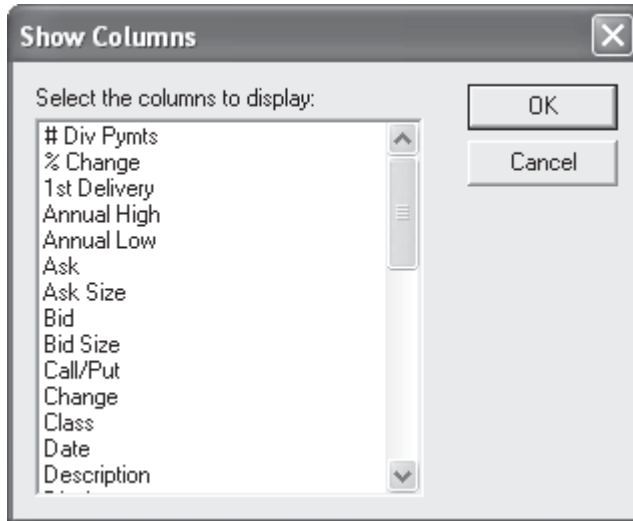
Right-click on column menu

Adding and removing columns

You add new columns to the Quotes and Barometer window by selecting from a list of available data columns. You can also remove existing columns.

► *To add a new column to the Quotes and Barometer window:*

1. Click with your right mouse button on any existing column header and select **Insert Column** from the menu that appears. The *Show Columns* dialog box appears listing the available columns.
2. From the list, select the column that you want to add and click **OK**.



Show Columns dialog box

► *To remove an existing column:*

1. Click with your right mouse button on any existing column header.
2. From the menu that appears, select **Remove Column**.

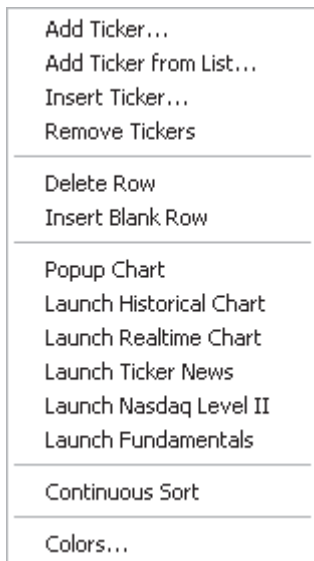
Row# column

A special column, named *Row#*, displays a number that is assigned to each ticker at the time it is entered into the list of tickers. When this column is used to sort the list (see next section), the list is sorted in the order that each ticker was entered into the list. Also, when the list is sorted by *Row#*, two items on the *Ticker* menu, *Delete Row* and *Insert Blank Row*, become available for use (see section on next page, Adding and removing rows).

Sorting quotes and other ticker information

Quotes and other ticker information listed in the *Real-Time Quotes and Custom Barometer* window can be sorted in the order of any of the columns. A number of different mechanisms are provided for specifying how the list is sorted.

- Click on a column head with left the mouse button. Using the data in the selected column, rows are instantly sorted in alphabetic or numeric order. Clicking a second time on the same column head will reverse the sorting order (from ascending to descending or vice versa).
- Right click on a column head to display the column and sorting menu. From this menu, select your sorting preference for the selected column. You can specify the column to be used for the primary or the secondary sorting criteria and you can specify ascending or descending order.
- Right click on a ticker in the *Ticker* column to display the ticker menu. This menu includes an option named *Continuous Sort*. When this option is selected, the data is continuously sorted as new data is received. The sorting order is based on the column or columns selected for sorting (see above).



Right-click on ticker menu

Adding and removing rows

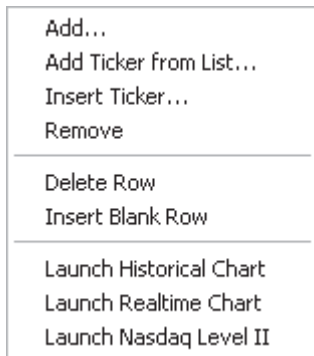
The *Delete Row* and *Insert Blank Row* selections on the *Ticker* menu can be used to remove an existing row from or add a blank row to the Quotes and Barometer window. However, these menu selections are only active when the list is sorted in the order of the *Row#* column (see previous page).

► *To delete an existing column from the Real-Time Quotes and Custom Barometer window:*

1. Click on the **Row#** column to sort the Ticker List in the order of ticker entry. (If the *Row#* column does not already exist, you will need to first add it to the window.)
2. Use your mouse to select the row that you want to remove.
3. Choose **Delete Row** from the **Ticker** menu. The row will be removed and the numbers in the *Row#* column will be changed to reflect the deletion of the row.

► *To add a new blank row to the Real-Time Quotes and Custom Barometer window:*

1. Click on the **Row#** column to sort the Ticker List in the order of ticker entry. (If the *Row#* column does not already exist, you will need to first add it to the window.)
2. Use your mouse to select the row above which you want to insert a blank row.
3. Choose **Insert Blank Row** from the **Ticker** menu. A blank row will now appear above the selected row and the numbers in the *Row#* column will be changed to reflect the addition of the new row.



Ticker menu

Charting tickers from Real-Time Quotes and Custom Barometer

Add Ticker...
Add Ticker from List...
Insert Ticker...
Remove Tickers

Delete Row
Insert Blank Row

Popup Chart
Launch Historical Chart
Launch Realtime Chart
Launch Ticker News
Launch Nasdaq Level II
Launch Fundamentals

Continuous Sort

Colors...

Right-click on ticker menu

An AIQ chart of a ticker can be accessed directly from the Quotes and Barometer window. Either a real-time or historical chart can be displayed. To display a historical chart, the symbol must be in your *Data Manager* ticker list and you must have historical data for that ticker.

You can also access a popup chart of any ticker in your list. This chart displays dynamically updating real-time 5-minute OHLC price bars.

► To access an AIQ chart:

1. Select the ticker to chart by clicking on it with your right mouse button.
2. From the menu that appears, select **Launch Historical Chart** or **Launch Realtime Chart**. The chart will be displayed.

► To access a real-time popup chart:

1. Select the ticker to chart by clicking on it with your right mouse button.
2. From the menu that appears, select **Popup Chart**. A chart similar to the one below will pop onto your screen.



Popup chart of AMGN

Displaying news headlines and stories

News headlines can be accessed directly from the *Real-Time Quotes and Custom Barometer* application. This feature is available for *myTrack* users with the appropriate account entitlements. For detailed information, see Chapter V, News Headlines.

Obtaining Nasdaq Level II Quotes

Nasdaq Level II quotes (snap or dynamic) can be accessed directly from the *Real-Time Quotes and Custom Barometer* application. This feature is available for *myTrack* users with the appropriate account entitlements. For detailed information, see Chapter IV, Nasdaq Level II.

Displaying fundamental information

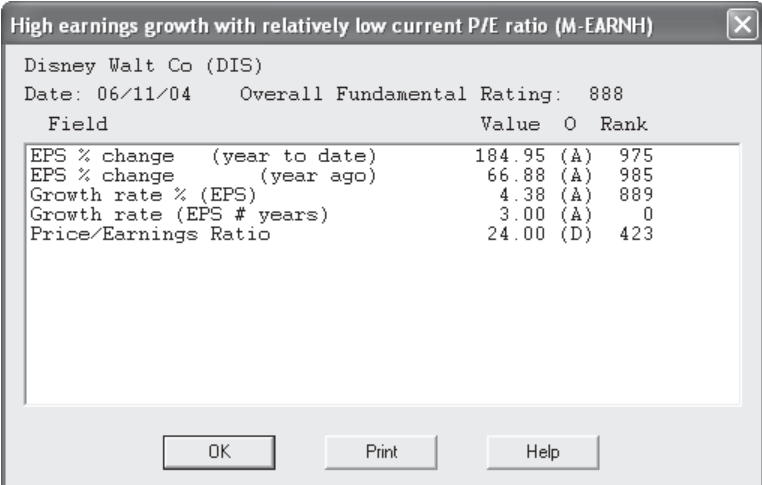
Fundamental data can be displayed from the *Real-Time Quotes and Custom Barometer* application. To be accessed, however, fundamental data must first be downloaded using the *Data Retrieval* application.

Note

For more information on fundamental data, see Part 6.

► *To display fundamental data:*

1. Select a ticker by clicking on it with your right mouse button.
2. From the menu that appears, select **Launch Fundamentals**. The fundamental information screen will be displayed.



High earnings growth with relatively low current P/E ratio (M-EARNH)

Disney Walt Co (DIS)
Date: 06/11/04 Overall Fundamental Rating: 888

Field	Value	O	Rank
EPS % change (year to date)	184.95	(A)	975
EPS % change (year ago)	66.88	(A)	985
Growth rate % (EPS)	4.38	(A)	889
Growth rate (EPS # years)	3.00	(A)	0
Price/Earnings Ratio	24.00	(D)	423

OK Print Help

Fundamentals screen for Disney