

Chapter II

Setting Up

In this chapter

1. Setting up for real-time data 684
 - Starting Real-Time Quotes and Custom Barometer 685
2. Specify tickers to monitor 686
3. Color customize the Quotes and Barometer windows 689
4. Change the font for text on the Quotes and Barometer windows 690

1. Setting up for real-time data

If you are already set up to receive real-time data, you can proceed with *Starting Real-Time Quotes and Custom Barometer* on next page.

If you are not set up to receive real-time data, the *Service Setup* function is used to enter the information required for connection to your real-time data service through the internet. To access ***Real-Time Quotes and Custom Barometer***, you will need a real-time data account. If you have not yet established an account, you will need to do so.

► *To access Service Setup:*

1. In order to access *Service Setup*, you must first disconnect from the internet.
2. Open ***Real-Time Quotes and Custom Barometer*** by clicking **Barometer** on the TradingExpert Pro Quick Launch Menu.
3. Since you are not connected to the internet, the *Dial-up Connection* dialog box may appear. Click **Cancel** then click **No** on the next dialog box that appears. The ***Real-Time Quotes and Custom Barometer*** window should now be displayed.
4. Select **Service Setup** from the **File** menu. The *Real-time Setup* dialog box will appear.
5. Click the arrow on the *Service* list box to find and select your real-time data service. Instructions for setting up for real-time data can be found in the *Real-Time Charts* section of *Charts*, Chapter IV in Part 1 of this manual.

Starting Real-Time Quotes and Custom Barometer



Barometer quick-launch menu button

For access to real-time information, the *Real-Time Quotes and Custom Barometer* application requires connection to the internet. You can either establish connection through your internet service provider prior to starting *Real-Time Quotes and Custom Barometer* or you can let the application bring up the *Connection* dialog box.

► *To start, proceed as follows:*

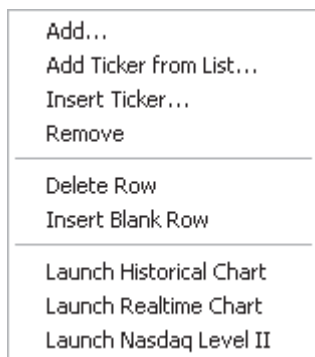
1. Open *Real-Time Quotes and Custom Barometer* by selecting the **Barometer** button from the TradingExpert Pro Quick Launch Menu.
2. The window that appears depends on whether or not your PC was connected to the internet.
 - If an internet connection was already established, the *Quotes and Barometer* window appears with the *Connect* toolbar button showing an active connection (button is lighter shade of gray).
 - If your PC was not connected to the internet, the *Dial-up Connection* window may appear first. Click the **Connect** button to establish an internet connection through your regular service provider. Once you are dialed into the internet and a connection is established, the *Quotes and Barometer* window will appear.

The first time the *Real-Time Quotes and Custom Barometer* application is opened, the Ticker List and the main window should be empty. To set up the application to monitor a list of tickers in real time, follow the instructions in the rest of this chapter.

Note

When *Real-Time Quotes and Custom Barometer* is properly connected through the internet, the *Connect* toolbar button is changed to a lighter shade of gray and a check mark appears next to *Connect* on the *File* menu.

2. Specify tickers to monitor

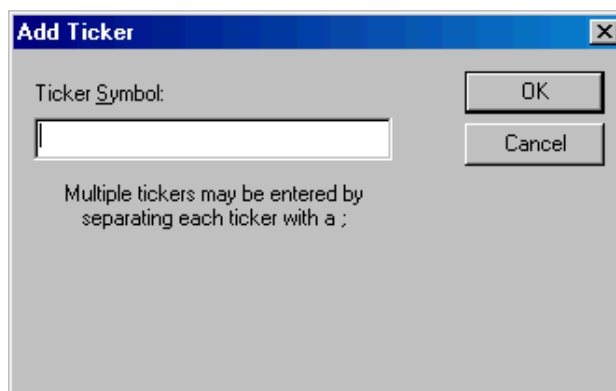


Ticker menu

Add tickers

► *To add tickers, proceed as follows:*

1. Display the *Add Tickers* dialog box:
 - Select the **Ticker** command on the menu bar and select **Add...** from the drop-down menu. Or, click with the right mouse button anywhere in the Quotes and Barometer monitor and select **Add Ticker** from the popup menu.



Add Ticker dialog box

Note

Please ensure that access to your data service is operating properly before configuring *Real-Time Quotes and Custom Barometer*.

2. In the *Add Ticker* dialog box, type the symbols of the tickers you want to monitor. You may enter multiple symbols by separating each with a semicolon (;).
3. Press **OK**. The symbol(s) you entered will appear in the Ticker List.
4. Save your list of tickers to a Barometer file (see next).

Save your list of tickers to a file

► *To save a list of tickers to a BCF file:*

1. From the **File** command on the menu bar, select **Save As**.
2. Use the *Save As* dialog box to specify a file name (file extension BCF will be automatically added) and the folder where you want the file to be stored.
3. Click **Save**.

Note

Use the Windows Explorer function to delete a Barometer file (file extension BCF) from the file folder to which it was saved.

4. You may create and save as many Barometer files as you like. Use the *File* menu command *New* to close the currently open file before creating a new file.
5. After creating and saving multiple files, use the *Open* command on the *File* menu to switch between files.

Import list of tickers from Data Manager

Lists of tickers created in *Data Manager* can be imported directly into the Ticker List of the Quotes and Barometer window.

Note:

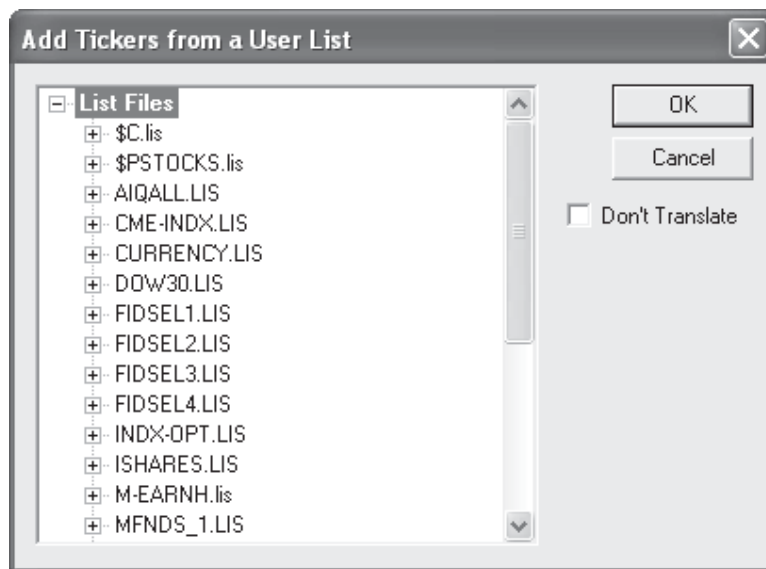
You may add all the tickers in a list or group/sector by highlighting the list or group/sector symbol and clicking **OK**.

► To import a list:

1. From the **Ticker** command on the menu bar, select **Add ticker from List** (or click with your right mouse button anywhere in the window and select **Add Ticker from List**). A dialog box is displayed that contains an expandable list comprised of all your lists.

Note:

For some special tickers, the symbol format used by Dial/Data differs from the format required by Track Data, the provider of real-time information. When you import a list of tickers into *Real-Time Quotes and Custom Barometer*, all symbols are automatically converted to the required format.



Add Ticker from List dialog box, with List Files expanded to show all available lists

2. Click on the small box (with + sign) named **List Files**. List will expand to display all your TradingExpert Pro lists that have been created in *Data Manager*. You can display the tickers in a list by clicking on the small box to the left of the list name. If the list contains sub-lists, the sub-list names (with boxes) will appear.
3. Select the list you want to import by clicking its box.

Note

To remove a ticker from the Ticker List, highlight the ticker and then select **Remove** from the Right Mouse Click menu.

4. Click **OK** to transfer the selected list to the Quotes and Barometer window. The list of tickers should now appear in the Ticker List. (To add an individual symbol, open the list, select the symbol you wish to add, and click **OK**.)
5. Select **Save** from the **File** menu to save the list to a BCF file.

Open a list of tickers that has been previously saved to file

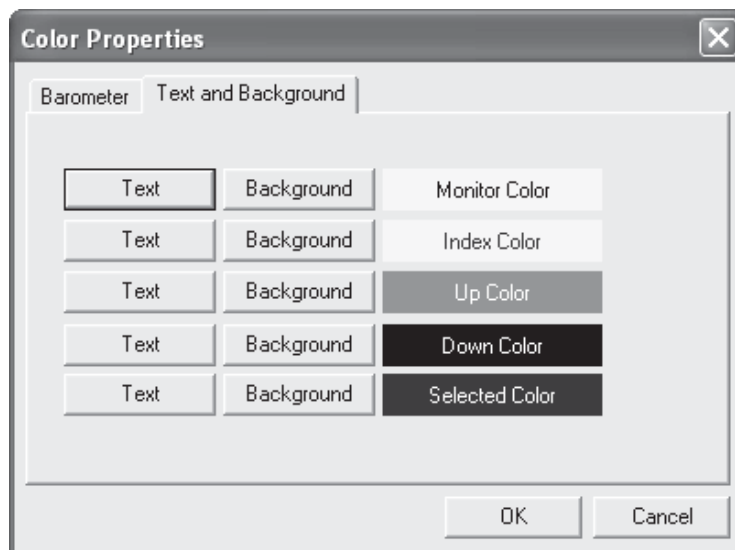
► *To open a list of tickers that has been saved to a file:*

1. From the **File** command on the menu bar, select **Open**.
2. Use the *Open* dialog box to locate and select the file that you want to open. Two types of files can be opened:
 - AIQ Real-Time Quotes & Custom Barometer Files.
 - Quotes (.quo) Files. Although these are files that were created with the former AIQ Quotes application, they can be opened in *Real-Time Quotes and Custom Barometer*. Once opened, a Quotes file can then be saved as an AIQ Real-Time Quotes & Custom Barometer File. To locate Quotes Files, you must first change the *Files of Type* box to the *Quotes Files* selection.
3. With the file selected, click **Open**. The Open box will close and the new list will now appear in the ticker panel of the *Real-Time Quotes and Custom Barometer* application window.

3. Color customize the Quotes and Barometer window

► *Display the Text and Background page of the Color Properties dialog box:*

1. From the **View** menu, select **Colors**. Or click the right mouse button and select **Colors** from the popup menu.



Text and Background page of Color Properties dialog box

2. At the top of the *Color Properties* dialog box, click **Text and Background** to display the page.

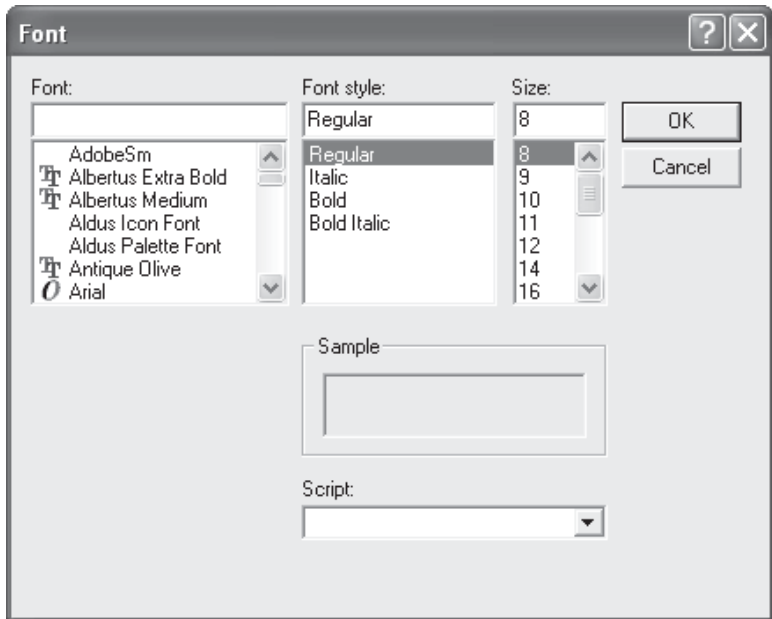
► *To change colors:*

1. Select a component by clicking on it. Then select **Text** or **Background**. (The *Monitor Color* governs the entire window.)
2. From the *Color* dialog box, choose one of the Basic colors or create a Custom Color and click **OK**.

4. Change the font used for text on the Quotes and Barometer window

► *Display the Font dialog box:*

From the **View** menu, select **Font**. The *Font* dialog box will appear.



Font dialog box

► *To change the font:*

1. From the list boxes at the top of the *Font* dialog box, make the following three selections:
 - **Font**
 - **Font style**
 - **Size**
2. A sample of the selected font, style, and size will appear in the box labeled *Sample*.
3. To save your change, click **OK**.