

Building Custom Alerts

In this chapter

Creating a Custom Alert 794

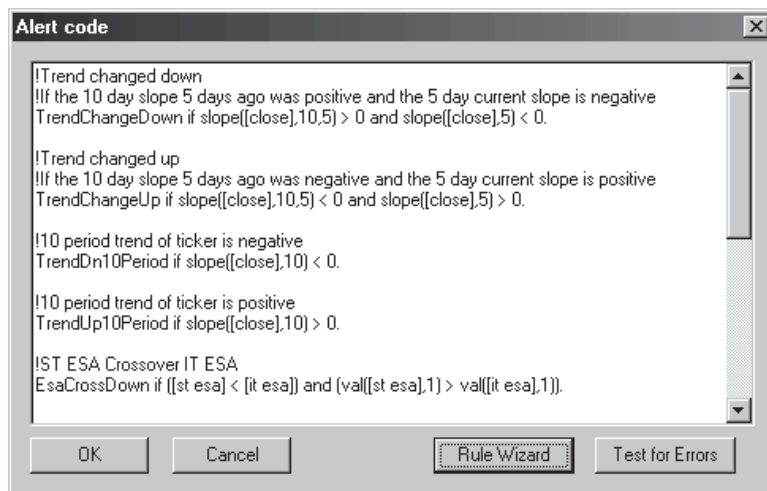
Creating a Custom Alert Using Rule Builder 795

Creating a Custom Alert

Alerts are constructed from indicators, functions, key words, and operators and must adhere to strict language and formatting rules. The construction of an Alert is identical to the construction of an EDS Rule. For detailed information on how to create EDS Rules, see *Part 2. Expert Design Studio* in this manual.

► *To create a Custom Alert:*

1. From the **File** command on the menu bar, select **Alert Properties**, click the **Alert Properties** toolbar button, or select **Alerts** from the Right Mouse Click menu.
2. In the *Properties* dialog box, click **Edit Alerts**. The *Alert Code* window will appear.
3. To create a new Alert in the *Alert Code* window, scroll to the bottom of the page, click an insertion point, and type the Alert. The Alert must begin with the Alert name followed by a space, the word *if*, another space, and the body of the Alert. An Alert body is exactly equivalent to an EDS Rule body (see the documentation for EDS Rules in *Part 2. Expert Design Studio* in this manual).
4. Click **Test for Errors** to verify that the code is correctly entered.
5. Click **OK**. The new Alert will appear in the list of *Active Alerts* in the *Properties* dialog box.
6. Click **OK** to return to the main *Alerts* window.

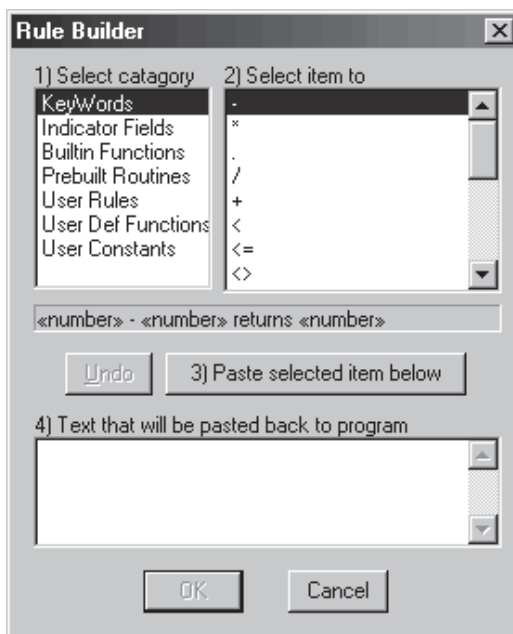


Alert Code window

Creating a Custom Alert using Rule Builder

► To create a Custom Alert using the Rule Builder, do the following:

1. Open the **Alerts Properties** dialog box.
2. In the *Properties* dialog box, click **Edit Alerts**. The *Alert Code* window will appear.
3. From the *Alert Code* window, click **Rule Wizard** to display the *Rule Builder* dialog box.



Rule Builder dialog box

4. Use the *Rule Builder* dialog box to create the Alert code. This function is identical to the Rule Wizard found in the *Expert Design Studio* application (see Part 2 in this manual).
5. Click **OK** to return to the *Alert Code* window. The code for your new Alert will now appear in the *Alert Code* window.
6. Click **Test for Errors** to verify that the code is correctly entered.
7. Click **OK** to return to the *Properties* dialog box.
8. The new Alert will appear in the list of *Active Alerts* in the *Properties* dialog box. Click **OK** to return to the main *Alerts* window.

