

# Introduction to Real-Time Alerts

## Overview

---

The Real-Time Alerts function is designed for short-term traders and users with a need to track securities in real-time. The Real-Time Alerts window allows you to monitor tickers with dynamically updating real-time charts. The price plot can be customized with a number of different indicators and moving averages and a large selection of technical indicators are also available for display.

The Alerts feature provides continuous monitoring of any number of securities. You specify the technical conditions that you deem important, such as a price gap up or down, by selecting the type of technical action that you want to look for. You can also create your own Alert conditions using the built-in Rule Builder function (from TradingExpert's Expert Design Studio). Then, when one of your conditions is met by any of the tickers you are monitoring, an Alert is signaled. All tickers will generate signals from all active Alerts. Both visual and audible signals can be given.

## Explanation of the Real-Time Alerts window

---

When you open the *Real-Time Alerts* application, you see a large chart window which is surrounded by three smaller panels.

**Chart window** This window monitors tickers with dynamically updating real-time charts.

**Ticker List** A list of the tickers that you will track in real-time is displayed in this panel. The panel is initially empty.

**Control Panel** This panel displays a list of the optional indicators and price averages that are available for display in the Chart window. You select the indicators that you want to display by clicking on their names in the panel. When you select or deselect an indicator, the chart is instantly revised to reflect the change.

**Alert grid** The panel located below the Chart window displays a list of the Alerts that have occurred during the current day. Each Alert in this list shows the ticker, the date and time of the Alert, and the name assigned to the Alert.

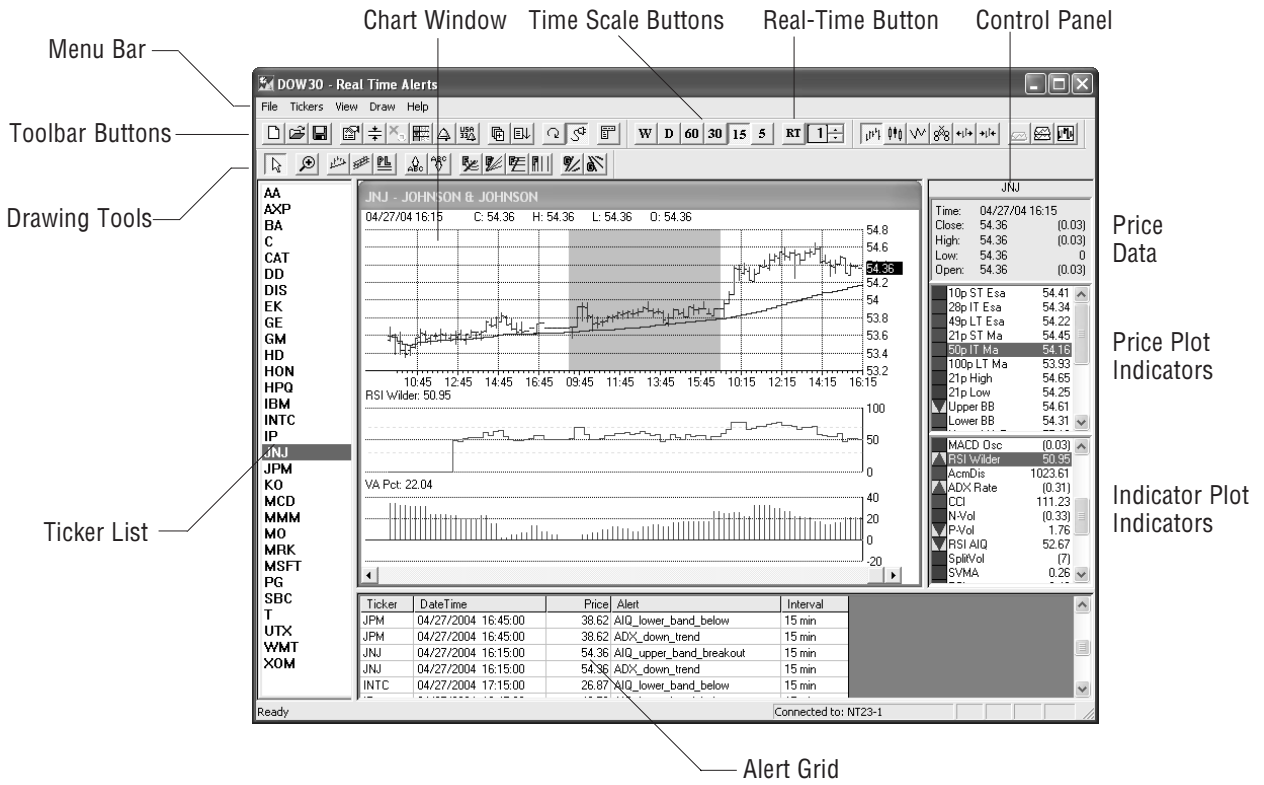
**Toolbar buttons** The Toolbar buttons at the top of the *Real-Time Alerts* window provide quick access to several important features.

**Time Scale Buttons** This row of toolbar buttons controls the chart's time scale. For intraday charting, five different time scales are provided. These range between one and 60 minutes. You can also switch to a Weekly or Daily chart.

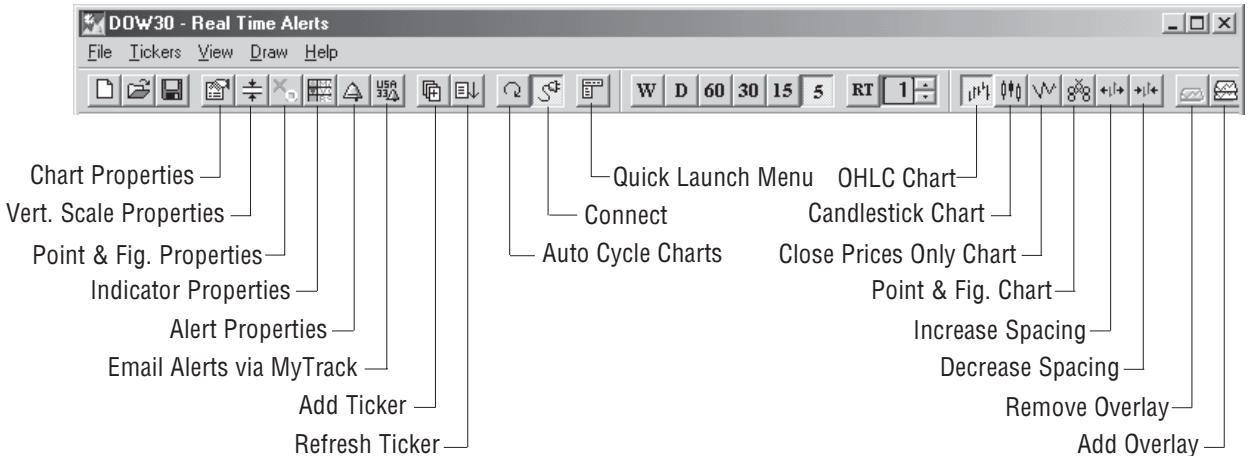
**Menu Bar** Commands access functions for the *Real-Time Alerts* application.

### Note

The **Clear Alert List** function found on the **View** menu may be used to clear the Alerts panel.

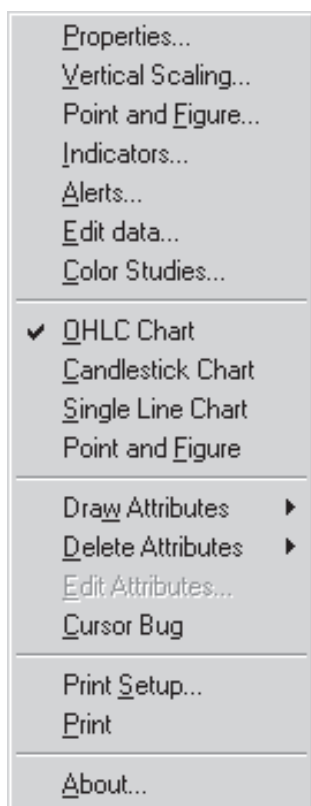


## Toolbar Buttons



## Right Mouse Click menu

---



With your cursor pointed within the chart window, pressing the right mouse button displays a menu. This menu allows you to access dialog boxes and to select options:

**Properties** Change general chart properties (colors, plot spacing, etc.)

**Vertical Scaling** Change breadth of price scale shown on charts

**Point and Figure** Change Point and Figure charting parameters

**Indicators** Change indicator properties

**Alerts** Change Alert properties (*Edit Alerts* command located here)

**Edit data** Edit price data

**Color Studies** Configure or edit Color Studies for Alerts

**OHLC Chart** Check this option for Hi/Lo price bars

**Candlestick** Check this option to display candlestick charting

**Single Line** Check this option for a single line on price plot

**Point and Figure** This option displays Point and Figure chart

**Draw Attributes** Draw trendlines and up/down markers

**Delete Attributes** Delete trendlines and markers on current ticker or all tickers

**Edit Attributes** Edit trendlines and markers

**Cursor Bug** Shows exact coordinates of cursor location

**Print Setup** Set parameters for printing charts

**Print** Print selected chart

## Predefined Alerts

---

A variety of predefined Alerts (more than three dozen) are provided that can be selected for monitoring tickers in real-time. Predefined Alerts include:

- ESA Cross Down, ESA Cross Up
- Gap Down, Gap Up
- Good Phase Down, Good Phase Up
- Trend Change Down, Trend Change Up
- Trend Down last 10 periods, Trend Up last 10 periods
- Volume Spike
- Trendline Break Down and Up
- Candlestick patterns (9 different)
- Price New High or New Low unconfirmed by OBV or OBV %
- Money Flow Down Price Up, Money Flow Up Price Down
- MACDI Cross Up, MACDI Cross Down
- RSI Falls Below 70, RSI Rises Above 30
- Bollinger Band Squeeze
- ADX Trend Down, ADX Trend Up

Alerts are coded in exactly the same format and language used for defining the EDS Rules in TradingExpert's *Expert Design Studio* application. Any of the predefined Alerts can be viewed and modified through the *Edit Alerts* function (*Alerts Properties* dialog box).

The *Edit Alerts* function also provides access to the EDS Rule Builder that may be used to create Custom Alerts.

## **Real-Time Alerts shortcut keys**

---

<b>Ctrl + N</b>	File New
<b>Ctrl + O</b>	File Open
<b>Ctrl + +</b>	Increase Price Plot Spacing
<b>Ctrl + -</b>	Decrease Price Plot Spacing
<b>F3</b>	Clear Alert List
<b>F6</b>	View/Hide All
<b>F7</b>	View/Hide Status Bar
<b>F8</b>	View/Hide Ticker List
<b>F9</b>	View/Hide Alert Grid
<b>F10</b>	View/Hide Entire Control Panel
<b>F11</b>	View/Hide Date/Price Panel